

Assembly Alert: 115

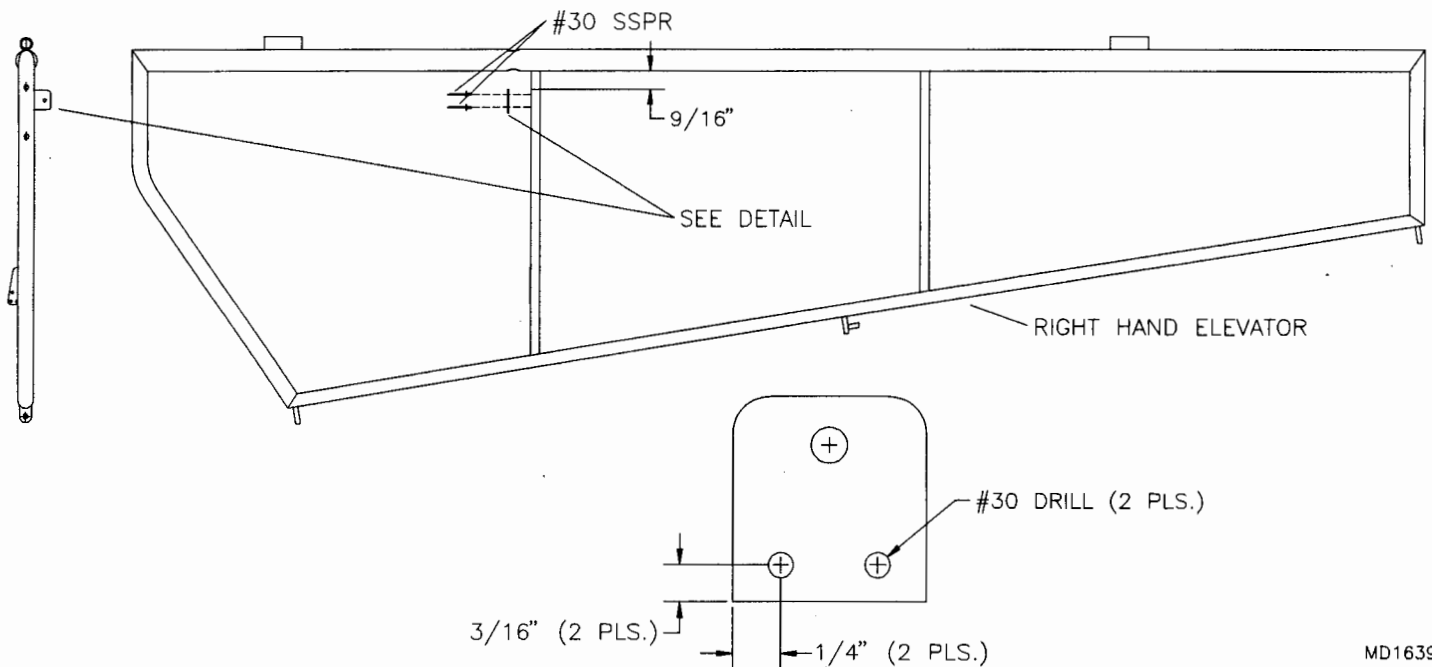
Date: December 1, 1994

Subject: Trim Tab, Spring Return Tab

Compliance: Mandatory

Models Effected: S-7 Courier With Serial #'s: 0594132 thru 1194142.

The right hand elevator in your kit was constructed minus the trim tab, spring return tab. The enclosed kit will provide a means to correct this problem.



1. Locate two #30 holes in the 1" X 1" tab as shown in the above diagram.
2. Locate this tab on the inboard compression tube 9/16" as shown above. Hold this tab on the inboard side of the compression tube, then mark the location of the #30 holes on the compression tube centerline. Drill and rivet the tab to the compression tube using two #30 stainless steel pop rivet.